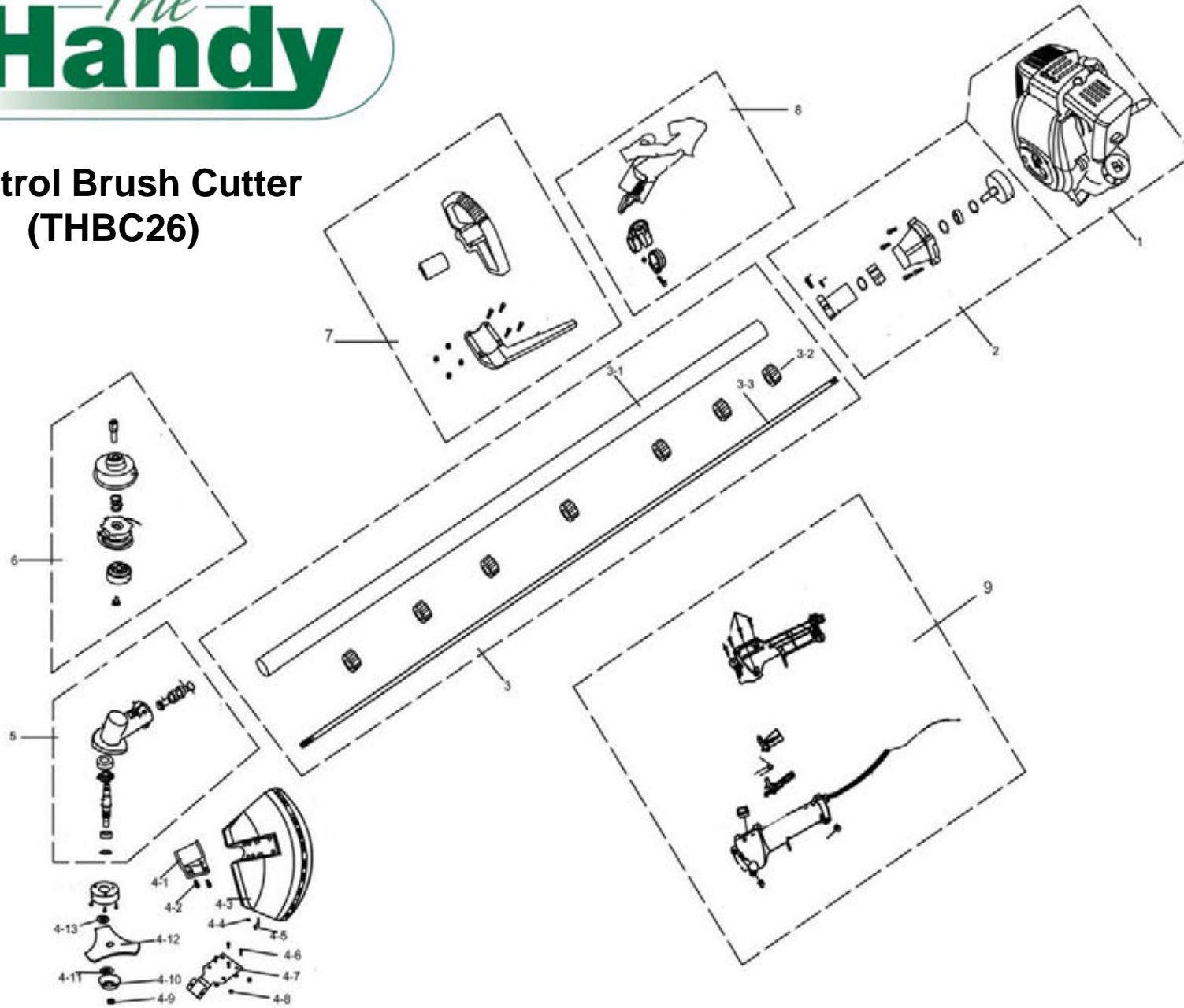




# Petrol Brush Cutter (THBC26)

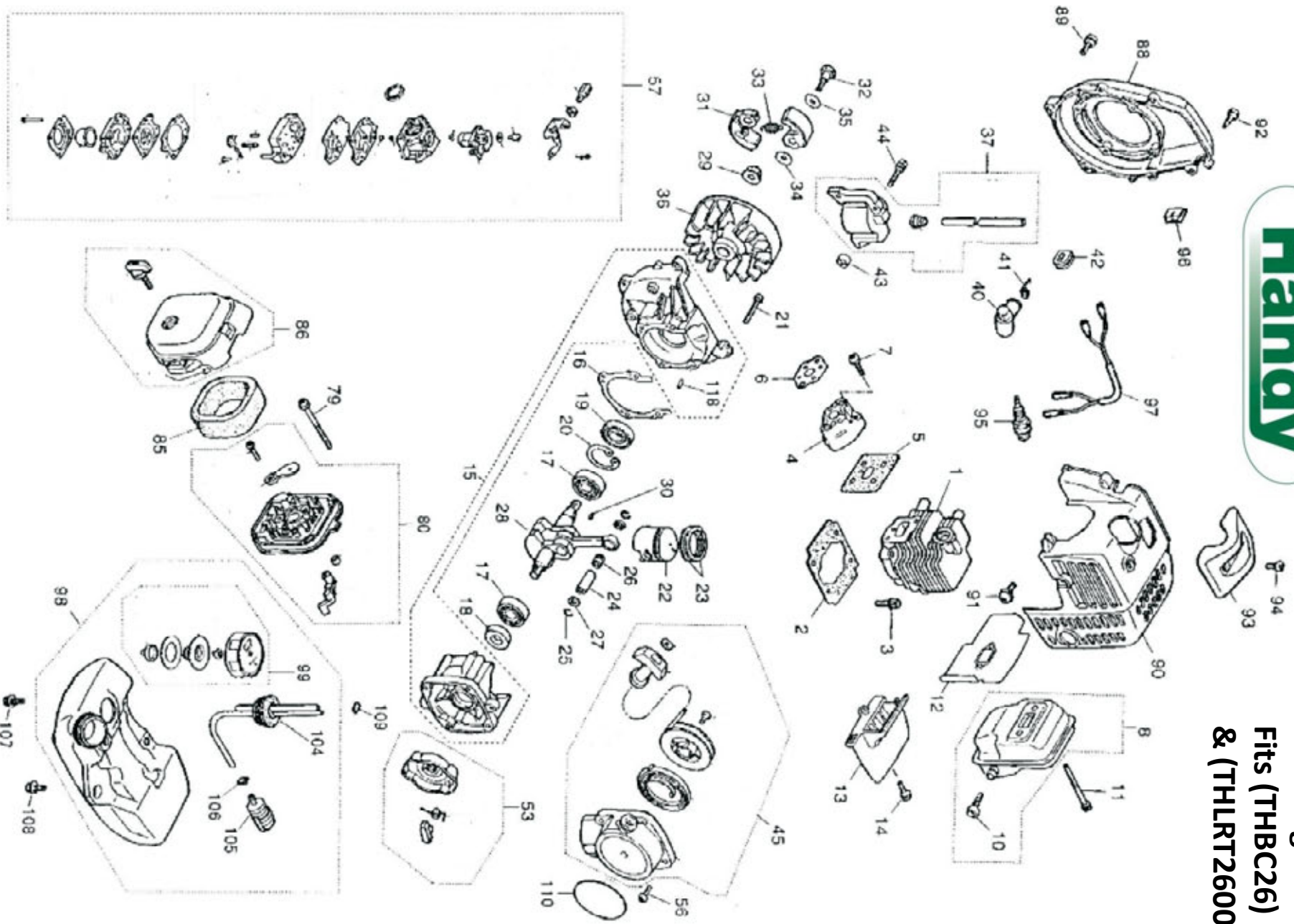




| <u>No</u> | <u>Part No</u> | <u>Description</u>          | <u>Qty</u> | <u>No</u> | <u>Part No</u> | <u>Description</u>   | <u>Qty</u> |
|-----------|----------------|-----------------------------|------------|-----------|----------------|----------------------|------------|
| 1         | TH125-1        | Engine see 26cc Engine List | n/a        | 4-7       | TH125-4-7      | Plate                | 1          |
| 2         | TH125-2        | Clutch Assy                 | 1          | 4-8       | TH125-4-8      | Nut M5               | 4          |
| 3         | TH125-3        | Drive Shaft Complete        | 1          | 4-9       | TH125-4-9      | Nut M10              | 1          |
| 3-1       | TH125-3-1      | Drive Shaft Cover           | 1          | 4-10      | TH125-4-10     | Cover                | 1          |
| 3-2       | TH125-3-2      | Bush                        | 8          | 4-11      | TH125-4-11     | Holder B             | 1          |
| 3-3       | TH125-3-3      | Shaft                       | 1          | 4-12      | TH125-4-12     | Blade                | 1          |
| 4-1       | TH125-4-1      | Bracket                     | 1          | 4-13      | TH125-4-13     | Holder A             | 1          |
| 4-2       | TH125-4-2      | Bolt M5x25                  | 2          | 4-14      | TH125-4-14     | Cover                | 1          |
| 4-3       | TH125-4-3      | Guard                       | 1          | 5         | TH125-5        | Gearcase Assy        | 1          |
| 4-4       | TH125-4-4      | Screw                       | 1          | 6         | TH125-6        | Line Head Assy       | 1          |
| 4-5       | TH125-4-5      | Blade                       | 1          | 7         | TH125-7        | Handle Assy          | 1          |
| 4-6       | TH125-4-6      | Bolt M5x25                  | 4          | 9         | TH125-9        | Throttle Handle Assy | 1          |



**26cc Engine  
Fits (THBC26)  
& (THLRT2600)**





**26cc Engine  
Fits (THBC26)  
& (THLRT2600)**

| <u>No</u> | <u>Part No</u> | <u>Description</u>  | <u>Qty</u> | <u>No</u> | <u>Part No</u> | <u>Description</u> | <u>Qty</u> |
|-----------|----------------|---------------------|------------|-----------|----------------|--------------------|------------|
| 1         | TH126-1        | Cylinder            | 1          | 40        | TH126-40       | Cap,Plug           | 1          |
| 2         | TH126-2        | Gasket,Base         | 1          | 41        | TH126-41       | Spring             | 1          |
| 3         | TH126-3        | Bolt                | 2          | 42        | TH126-42       | Grommet            | 1          |
| 4         | TH126-4        | Insulator           | 1          | 43        | TH126-43       | Spacer             | 2          |
| 5         | TH126-5        | Gasket,Insulator    | 1          | 44        | TH126-44       | Bolt               | 2          |
| 6         | TH126-6        | Gasket,Carburetor   | 1          | 45        | TH126-45       | Recoil Ass'y       | 1          |
| 7         | TH126-7        | Screw               | 2          | 53        | TH126-53       | Pulley Ass'y       | 1          |
| 8         | TH126-8        | Muffler Ass'y       | 1          | 56        | TH126-56       | Screw              | 4          |
| 10        | TH126-10       | Arrestor            | 1          | 57        | TH126-57       | Carburetor Ass'y   | 1          |
| 11        | TH126-11       | Bolt                | 2          | 79        | TH126-79       | Screw              | 2          |
| 12        | TH126-12       | Gasket,Muffler      | 1          | 80        | TH126-80       | Body Ass'y         | 1          |
| 13        | TH126-13       | Plate,Muffler       | 1          | 81        | TH126-81       | Sleeve             | 2          |
| 14        | TH126-14       | Screw               | 1          | 82        | TH126-82       | Plate,Choke        | 1          |
| 15        | TH126-15       | Crancase Complete   | 1          | 83        | TH126-83       | Lever,Choke        | 1          |
| 16        | TH126-16       | Gasket,Case         | 1          | 84        | TH126-84       | Screw              | 1          |
| 17        | TH126-17       | Bearing             | 2          | 85        | TH126-85       | Element            | 1          |
| 18        | TH126-18       | Oil Seal            | 1          | 86        | TH126-86       | Cover Ass'y        | 1          |
| 19        | TH126-19       | Oil Seal            | 1          | 88        | TH126-88       | Cover,Fan          | 1          |
| 20        | TH126-20       | Snap Ring           | 1          | 89        | TH126-89       | Screw              | 4          |
| 21        | TH126-21       | Screw               | 4          | 90        | TH126-90       | Cover,Engine       | 1          |
| 22        | TH126-22       | Piston              | 1          | 91        | TH126-91       | Screw              | 1          |
| 23        | TH126-23       | Ring                | 2          | 92        | TH126-92       | Screw              | 2          |
| 24        | TH126-24       | Pin                 | 1          | 93        | TH126-93       | Guard,Plug         | 1          |
| 25        | TH126-25       | Sanp Ring           | 2          | 94        | TH126-94       | Screw              | 1          |
| 26        | TH126-26       | Bearing             | 1          | 95        | TH126-95       | Spark Plug         | 1          |
| 27        | TH126-27       | Washer              | 2          | 96        | TH126-96       | Grommet            | 1          |
| 28        | TH126-28       | Crankshaft Complete | 1          | 97        | TH126-97       | Cord Complete      | 1          |
| 29        | TH126-29       | Nut                 | 1          | 98        | TH126-98       | Tank Ass'y         | 1          |
| 30        | TH126-30       | Key                 | 1          | 99        | TH126-99       | Cap Ass'y          | 1          |
| 31        | TH126-31       | Shoe,Clutch         | 2          | 104       | TH126-104      | Pipe Complete      | 1          |
| 32        | TH126-32       | Screw               | 2          | 105       | TH126-105      | Filter Ass'y       | 1          |
| 33        | TH126-33       | Spring              | 1          | 106       | TH126-106      | Clip               | 1          |
| 34        | TH126-34       | Washer              | 2          | 107       | TH126-107      | Screw              | 2          |
| 35        | TH126-35       | Washer              | 2          | 108       | TH126-108      | Screw              | 1          |
| 36        | TH126-36       | Rotor               | 1          | 109       | TH126-109      | Clip               | 1          |
| 37        | TH126-37       | Coil Ass'y          | 1          | 110       | TH126-110      | Label              | 1          |
|           |                |                     |            | 118       | TH126-118      | Pin                | 3          |